



ELIGIBILITY CENTER

A photograph of a lacrosse player in a white uniform with red accents, wearing black and red gloves, swinging a lacrosse stick. The player is in mid-air, and a white lacrosse ball is visible on the grass in the foreground. The background is a blurred blue sky. The image is framed by orange and red diagonal stripes on the left and right sides, respectively.

NCAA
GUIDE FOR
THE COLLEGE-BOUND
STUDENT-ATHLETE
2022-23

IMPORTANT INFORMATION FOR MY NCAA ELIGIBILITY CENTER ACCOUNT



Date I registered: _____

My NCAA ID: _____ My password: _____

My username (email address): _____

High school(s) I attended: _____

Date six-semester transcript submitted: _____

Date test score submitted: _____

Date final transcript (with proof of graduation) submitted: _____

Date I requested final amateurism certification: _____

CONTENTS

2	WHAT IS THE NCAA?
3	HOW TO USE THIS GUIDE
4	NCAA SPORTS
5	SCHOLARSHIPS
6	NATIONAL LETTER OF INTENT
6	THINKING OF GOING PRO?
7	OUR THREE DIVISIONS
8	TIME MANAGEMENT
11	INITIAL ELIGIBILITY
12	HIGH SCHOOL TIMELINE
13	STUDENT REGISTRATION
15	TEST SCORES
16	TRANSCRIPTS
16	EQUIVALENCY TESTS/DIPLOMAS
17	WHAT IS A CORE COURSE?
18	NONTRADITIONAL AND ONLINE COURSES
19	GRADE-POINT AVERAGE
19	QUESTIONS TO ASK
20	DIVISION I ACADEMIC STANDARDS
22	DIVISION I SLIDING SCALE
23	DIVISION I WORKSHEET
24	DIVISION II ACADEMIC STANDARDS
26	DIVISION II SLIDING SCALE
27	DIVISION II WORKSHEET
28	DIVISION III REQUIREMENTS
28	AMATEURISM
31	INTERNATIONAL STUDENTS
32	HOME SCHOOL STUDENTS
33	EDUCATION-IMPACTING DISABILITIES
34	IMPORTANT RECRUITING TERMS
35	RECRUITING CALENDARS



ELIGIBILITY CENTER

NCAA, Make It Yours, March Madness and Women's Final Four are trademarks of the National Collegiate Athletic Association. All other trademarks are property of their respective holders. August 2022.



The NCAA membership and national office work together to help the nearly 500,000 student-athletes develop leadership, confidence, discipline and teamwork through college sports.



WELCOME FROM THE PRESIDENT

Dear college-bound student-athlete:

I am glad you are interested in pursuing your education and sport at an NCAA member school. College sports provide the unique opportunity to compete at a high level in sport while working toward a college degree that will lead to lifelong achievement. The NCAA aims to make sure your college experience shapes your leadership skills, personal development and future success. No matter what career path you choose, your college degree will serve you far beyond your final competition.

This guide equips you with information about academic requirements to compete, but also informs you about what to expect when becoming a collegiate student-athlete. At the NCAA national office, staff members want to ensure high school athletes meet standards that will best prepare them to succeed in college. Initial eligibility determines your ability to receive an athletics scholarship and to practice and compete in your first year as a full-time college student. We are committed to supporting students across all three divisions on their road to success.

I encourage you to take an active role in the process of preparing for college. About 1,100 NCAA schools sponsor tremendous academics and athletics programs that are each unique. It would be beneficial for you to work closely with your high school counselors, coaches, parents/guardians and mentors as you make the transition to college.

I hope the information helps inform you, your family and high school administrators about the initial-eligibility process for NCAA Division I and II schools. If you are interested in NCAA Division III, please visit ncaa.org/d3 or read [page 28](#) to learn more about the initial-eligibility process in Division III.

If you have any questions, please reach out to us. My staff in the NCAA Eligibility Center strives to make your registration and certification experience positive and are always willing to help.

I wish you the best of luck as you embark on this important journey, and look forward to your future success.

All the best,

Mark Emmert
NCAA President

WHAT IS THE NCAA?

The National Collegiate Athletic Association is an organization dedicated to providing a pathway to opportunity for college athletes. More than 1,100 colleges and universities are members of the NCAA. Those schools work together with the NCAA national office and athletics conferences across the country to support 500,000 college athletes that make up more than 19,500 teams competing in NCAA sports.

The NCAA's diverse members include schools ranging in size from hundreds of students to tens of thousands. The NCAA's current three-division structure was adopted in 1973 to create a fair playing field for teams from similar schools and provide college athletes more opportunities to participate in national championships.

Among the three NCAA divisions, Division I schools generally have the biggest student bodies, manage the largest athletics budgets and offer the highest number of athletics scholarships. The Division II approach provides growth opportunities through academic achievement, learning in high-level athletics competition and a focus on service to the community. The Division III experience offers participation in a competitive athletics environment that pushes college athletes to excel on the field and build upon their potential by tackling new challenges across campus.

To learn more about the pathway that's right for you, visit ncaa.org/divisions.

WHO SHOULD USE THIS GUIDE?

This guide answers important questions for four groups of people involved in the NCAA initial-eligibility process:

- » High school students who hope to compete in college sports at an NCAA school.
- » Parents, guardians and family members of high school students.
- » High school counselors and athletics administrators.
- » High school and nonscholastic coaches.

HAVE A QUESTION ABOUT NCAA ELIGIBILITY?

Find answers to many typical questions about NCAA eligibility by:

- » Reading this guide.
- » Searching frequently asked questions at ncaa.org/studentfaq.
- » Visiting ncaa.org/playcollegesports.
- » Checking the Help section of eligibilitycenter.org.
- » Calling the NCAA Eligibility Center at 877-262-1492 9 a.m. to 5 p.m. Eastern time Monday-Friday.



ELIGIBILITY CENTER

NCAA ELIGIBILITY CENTER INFORMATION

ONLINE

ncaa.org/playcollegesports
eligibilitycenter.org

FOLLOW US

Twitter [@NCAAEC](https://twitter.com/NCAAEC)
Instagram [@playcollegesports](https://www.instagram.com/playcollegesports)
Facebook [@NCAAEC](https://www.facebook.com/NCAAEC)

CONTACT

U.S. and Canada (except Quebec):
877-262-1492 (toll free)
9 a.m. to 5 p.m. Eastern time Monday-Friday
International (including Quebec):
ncaa.org/contactinternational

CERTIFICATION PROCESSING

NCAA Eligibility Center
Certification Processing
P.O. Box 7110
Indianapolis, IN 46207-7110

OVERNIGHT DELIVERY

NCAA Eligibility Center
Certification Processing
1802 Alonzo Watford Sr. Drive
Indianapolis, IN 46202

HELPFUL HINTS

- » Visit ncaa.org/playcollegesports to learn more about opportunities available at NCAA schools.
- » Know the academic and amateurism standards for Divisions I and II and the [amateurism requirements](#) for Division III.
- » Find your high school's list of NCAA-approved core courses at eligibilitycenter.org/courselist.
- » Register with the Eligibility Center at eligibilitycenter.org before your freshman year of high school (or year nine of secondary school) if you are interested in playing college sports.
- » After six semesters of high school, ask your high school counselor from each school you have attended to upload an official transcript to your Eligibility Center account.

NCAA SPORTS

The NCAA conducts 90 national championships in 24 sports across Divisions I, II and III, with 45 championships administered for women, 42 for men and three coed national championships. That means almost 54,000 student-athletes participate in NCAA championships each year.

From signature events like the NCAA March Madness basketball tournaments to rowing, rifle, softball and skiing, the NCAA administers championships to ensure student-athletes have a

first-class experience. But the NCAA is also committed to quality events for everyone involved, from the coaches to the fans and broadcast audiences.

It is important to the NCAA that our championships have a positive impact on the communities that host them. The NCAA hosts youth clinics and various fan events to complement the competition – creating what is hoped to be a championship experience for everyone involved.

FALL SPORTS		WINTER SPORTS		SPRING SPORTS		EMERGING SPORTS
Men:	Women:	Men:	Women:	Men:	Women:	Women:
Cross Country	Cross Country	Basketball	Basketball	Baseball	Beach Volleyball	Acrobatics and Tumbling
Football	Field Hockey	Fencing	Bowling	Golf	Golf	Equestrian (Divisions I and II only)
Soccer	Soccer	Gymnastics	Fencing	Lacrosse	Lacrosse	Rugby
Water Polo	Volleyball	Ice Hockey	Gymnastics	Outdoor Track and Field	Outdoor Track and Field	Triathlon
		Indoor Track and Field	Ice Hockey	Tennis	Rowing	Wrestling
		Rifle	Indoor Track and Field	Volleyball	Softball	
		Skiing	Rifle		Tennis	
		Swimming and Diving	Skiing		Water Polo	
		Wrestling	Swimming and Diving			



SCHOLARSHIPS

NCAA Division I and II schools provide more than \$3.7 billion in athletics scholarships annually to nearly 190,000 student-athletes. **Division III schools** do not offer athletics scholarships.

Only about **2%** of high school athletes are awarded athletics scholarships to compete in college. Of the student-athletes participating in sports with professional leagues, **less than 2%** become professional athletes. A college education is the most rewarding benefit of your student-athlete experience.

Division I schools may provide tuition and fees, room and board, books and other expenses related to attendance at the school. Division II full scholarships cover tuition and fees, room and board, and course-related books and supplies. Most student-athletes who receive athletics scholarships receive an amount covering a portion of these costs.

Many student-athletes also benefit from academic scholarships, NCAA financial aid programs such as the NCAA Division I Student Assistance Fund, and need-based aid such as federal Pell Grants. You must report all financial aid you receive to your NCAA school's financial aid office. If you have questions about what financial aid can be accepted, contact your NCAA school's financial aid office and athletics department for help.

Division I schools may provide you with multiyear scholarships. **Division II schools** must provide you with a one-year scholarship. Additionally, Division I and II schools may provide funding for degree completion to finish your bachelor's or master's

degree after your time playing NCAA sports ends. NCAA rules require you to be registered with the NCAA Eligibility Center to go on an official visit, receive a written offer of financial aid or sign a **National Letter of Intent**.

If a school plans to reduce or not renew your aid, the school must notify you in writing by July 1 before the start of the impacted school year and provide an opportunity for you to appeal. In most cases, the head coach decides who receives a scholarship, the scholarship amount and whether it will be renewed.

Contact the NCAA school you hope to attend for more detailed information about NCAA financial aid rules.



NATIONAL LETTER OF INTENT

By signing a **National Letter of Intent**, you are agreeing to attend a Division I or II school for one academic year. NLI member institutions agree to provide athletics financial aid to you for a minimum of one academic year as long as you are admitted to the school and are eligible for financial aid under NCAA rules.

The NLI is voluntary and not required for you to receive financial aid or participate in sports. Signing an NLI ends the recruiting process because coaches are prohibited from recruiting student-athletes who have signed NLIs with other NLI-member schools.

If you sign an NLI but decide to attend another college, you may request a release, but it is at the school's discretion to grant your NLI release. If you sign an NLI with one school but attend a different school, you lose one full year of eligibility and must complete a full academic year at the new school before being eligible to compete. If you have questions about the NLI, visit nationalletter.org.



THINKING OF GOING PRO?

There are nearly 500,000 NCAA student-athletes, and **less than 2%** will go pro in their sport.

	MEN'S BASKETBALL	WOMEN'S BASKETBALL	FOOTBALL	BASEBALL	MEN'S ICE HOCKEY
High School Student-Athletes	540,769	399,067	1,006,013	482,740	35,283
NCAA Student-Athletes	18,816	16,509	73,712	36,011	4,323
NCAA Student-Athletes Drafted	52	31	254	791	71
*Percentage High School to NCAA	3.5%	4.1%	7.3%	7.5%	12.3%
*Percentage NCAA to Professional	1.2%	0.8%	1.6%	9.9%	7.4%


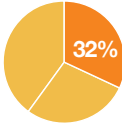
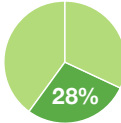
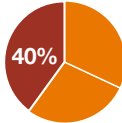







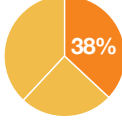
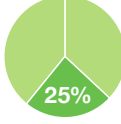
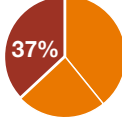

**Percentages based on estimated data.*

For the rest, the experiences of college athletics and the life lessons they learn along the way will help them as they pursue careers in business, education, athletics administration, communications, law, medicine and many more fields. Education is a vital part of the college athletics experience, and student-athletes treat it that way.

Overall, student-athletes graduate at higher rates than their peers in the student body, and those rates rise each year. For more information on graduation rates, search for "graduation rates" on ncaa.org.

Our Three Divisions

The NCAA's three divisions were created in 1973 to align like-minded campuses in the areas of fairness, competition and opportunity.

	DIVISION I	DIVISION II	DIVISION III
 <p>NUMBER OF SCHOOLS*</p>	<p>350</p> 	<p>300</p> 	<p>432</p> 
 <p>MEDIAN UNDERGRADUATE ENROLLMENT</p>	<p>8,466</p>	<p>2,323</p>	<p>1,655</p>
 <p>STUDENTS WHO ARE ATHLETES</p>	<p>1 in 23</p> 	<p>1 in 9</p> 	<p>1 in 6</p> 
 <p>AVERAGE NUMBER OF TEAMS PER SCHOOL</p>	<p>19</p>	<p>16</p>	<p>19</p>
 <p>PERCENTAGE OF NCAA STUDENT-ATHLETES IN EACH DIVISION</p>	<p>38%</p> 	<p>25%</p> 	<p>37%</p> 
 <p>ATHLETICS SCHOLARSHIPS</p>	<p>Multiyear, cost-of-attendance athletics scholarships available 57% of athletes receive athletics aid</p>	<p>Partial athletics scholarship model 60% of athletes receive athletics aid</p>	<p>No athletics scholarships 80% of athletes receive nonathletics aid</p>

*Numbers are from 2020-21. This does not include reclassifying, provisional or exploratory schools.

What are the eligibility requirements in each division?

College-bound students who want to compete at a Division I, II or III school must meet academic and/or amateurism standards set by NCAA members. Eligibility standards can be found on each division's page on eligibilitycenter.org.

How is each division governed?

NCAA schools develop and approve legislation for their own divisions. Groups of presidents and chancellors lead each division in the form of committees with regularly scheduled meetings.

Did you know?

DI student-athletes graduate at a higher rate than the general student body.



DI is the only division with schools in Alaska, Puerto Rico and Canada.

DIII's largest school has **25,854** undergraduates.

The smallest? **257.**



Learn more at ncaa.org.

DI Time Management

What Division I student-athletes should expect.

Time management is a key component of any college student's success, but it is especially important for students who play Division I sports. From classes to competition and everything in between, the student-athlete schedule stays busy year-round. Know what awaits before you step foot on the field.

What takes up a Division I student-athlete's time?

These are considered countable athletically related activities (CARA). NCAA rules limit the time student-athletes can spend on these activities each week. Check with your campus athletics department for more information.

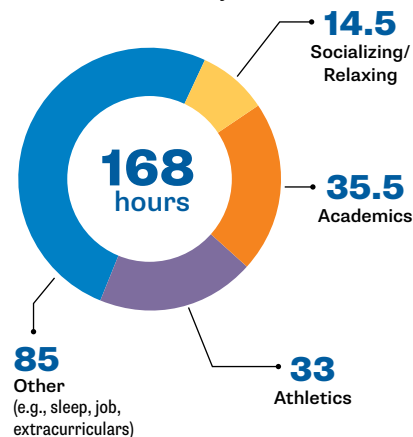


These activities do not count toward a team or student-athlete's countable athletically related activities limit.



Time spent on activities per week

(numbers listed in hours)
*Medians collected from the 2015 NCAA GOALS study.



67% of Division I student-athletes said they spend as much or more time on athletics during the offseason as during their competitive season.

*Based on the 2015 NCAA GOALS study.

Game Day

During a typical day of competition, Division I student-athletes report spending anywhere from four to nine hours on their sport.



*Based on a 2015 survey of Division I student-athletes.

DII Time Management

What Division II student-athletes should expect.

Time management is a key component of any college student's success. From classes to competition and everything in between, the student-athlete's schedule is busy. Know what awaits when you step foot on campus.

What takes up a Division II student-athlete's time?

These are considered countable athletically related activities (CARA).

NCAA rules limit the time student-athletes can spend on these activities each week. Check with your campus athletics compliance administrator for more information.

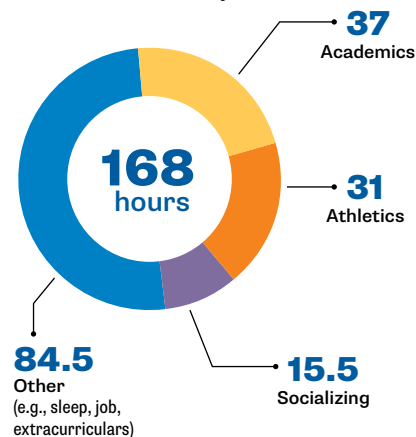


These activities do not count toward a team or student-athlete's countable athletically related activities limit.



Time spent on activities per week

(numbers listed in hours)
*Median figures, collected from the 2019 NCAA GOALS study.



63% of Division II student-athletes said they spend as much or more time on athletics during the offseason as during their competitive season.

*Based on the 2019 NCAA GOALS study.

1 in every 8.5 Division II student-athletes will participate in an NCAA championship during their college experience.



1/3 of Division II student-athletes work during the academic year for about nine hours per week on average.

*Based on the 2019 NCAA GOALS study.

DIII Time Management

What Division III student-athletes should expect.

Time management is a key component of any college student's success. From classes to competition and everything in between, the student-athlete's schedule is busy. Know what awaits when you step foot on campus.

The Division III experience includes:

These are considered countable athletically related activities (CARA).

NCAA rules limit the time student-athletes can spend on these activities each week. Check with your campus athletics compliance administrator for more information.



Academics



Competition



Compliance meetings



Film review



Graduate school



Injury treatment and prevention



Internship/externship



Leadership



Practice



Strength and conditioning



Team fundraising



Teamwork

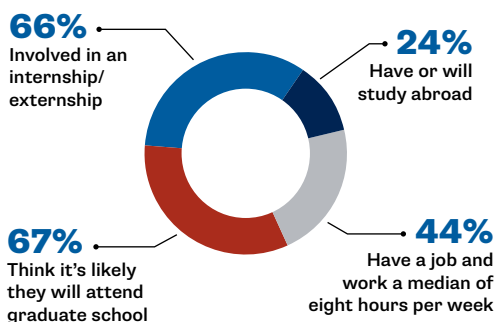


Time management



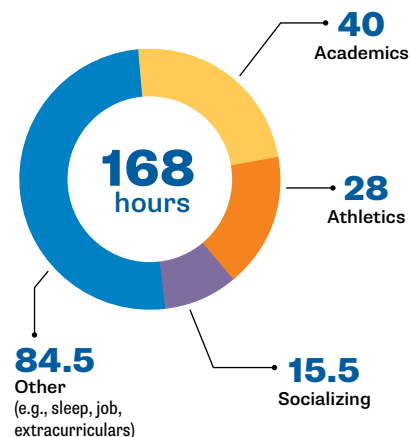
Work

Division III student-athletes note their athletics experience did not hinder their academic and co-curricular pursuits. In fact, it had a positive effect on their collegiate experience. (approximate percentages)



Time spent on activities per week

(numbers listed in hours)



Division III student-athletes report spending one day a week away from campus.

*Median amount; based on 2015 NCAA GOALS study.

50%

of Division III student-athletes said they spend as much or more time on athletics during the offseason as during their competitive season.

*Based on the 2015 NCAA GOALS study.

INITIAL ELIGIBILITY

Initial-eligibility standards help ensure you are prepared to succeed in college. The eligibility process also protects the fairness and integrity of college sports by ensuring student-athletes are amateurs.

If you want to practice, compete and receive an athletics scholarship during your first year at a Division I or II school, the NCAA Eligibility Center must certify you as eligible. International college-bound student-athletes planning to enroll at a **Division III school** must also receive an **amateurism-only certification** from the Eligibility Center. Throughout the process, Eligibility Center staff members partner with students and their families, as well as high school administrators and coaches, to guide you on your journey.

REMEMBER



As a college-bound student-athlete, you are responsible for your eligibility – that means planning ahead, taking high school classes seriously and protecting your amateur status. It can be a difficult first step, but the benefits of being a student-athlete are worth the effort.



“

I'm really seeing how I've learned from being a student-athlete, how I've grown from being a student-athlete, how it shaped who I am and who I'm working toward becoming.

Eka Jose

Track & Field, Washington University in St. Louis

”

HIGH SCHOOL TIMELINE

9th GRADE REGISTER



- » Start planning now! Register for a free Profile Page account at eligibilitycenter.org for information on NCAA initial-eligibility requirements.
- » Find your high school's list of NCAA-approved core courses at eligibilitycenter.org/courselist to ensure you are taking the right courses, and earn the best grades possible!

10th GRADE PLAN



- » If you are being actively recruited by an NCAA school and have a Profile Page account, [transition](#) it to the right [Certification account](#).
- » Monitor the [task list](#) in your NCAA Eligibility Center account for next steps.
- » At the end of the school year, ask your high school counselor from each school you have attended to upload an official transcript to your Eligibility Center account.
- » If you fall behind academically, ask your high school counselor for help finding [approved courses](#) you can take.

11th GRADE STUDY



- » Ensure your [sports participation](#) information is correct in your Eligibility Center account.
- » Check with your high school counselor to make sure you are on track to complete the required number of NCAA-approved [core courses](#) and graduate on time with your class.
- » Take the [SAT/ACT](#) and submit your scores to the Eligibility Center using code **9999**.*
- » At the end of the school year, ask your high school counselor from each school you have attended to upload an official transcript to your Eligibility Center account.

12th GRADE GRADUATE



- » [Request your final amateurism certification](#) beginning April 1 (fall enrollees) or Oct. 1 (winter/spring enrollees) in your Eligibility Center account at eligibilitycenter.org.
- » Take the [SAT/ACT](#) again, if necessary, and submit your scores to the Eligibility Center using code **9999**.*
- » Complete your final NCAA-approved [core courses](#) as you prepare for graduation.
- » After you graduate, ask your high school counselor to upload your final [official transcript](#) with proof of graduation to your Eligibility Center account.

*More information regarding the impact of COVID-19 and test scores can be found at on.ncaa.com/COVID19_Spring2023.

STUDENT REGISTRATION

If you want to compete in NCAA sports, you need to register with the NCAA Eligibility Center at eligibilitycenter.org. Plan to register before your freshman year of high school (or year nine of secondary school). The information below will help guide you through the registration process.

TO GET STARTED, DETERMINE THE ELIGIBILITY CENTER ACCOUNT TYPE YOU NEED:

- 1. Profile Page Account:** If you are not sure in which division you want to compete, or are a domestic student-athlete who plans to compete at a **Division III school**, create a free Profile Page account. If at any time you wish to pursue a Division I or II path, you'll be able to **transition** to the right **Certification account**. All **international student-athletes** who plan to compete at a Division III school should start with an Amateurism-Only Certification account.
- 2. Academic and Amateurism Certification Account:** You must receive an academic and amateurism certification from the Eligibility Center to compete at an NCAA Division I or II school. Before you can go on official visits or sign a Division I or II **National Letter of Intent**, you must have completed the Academic and Amateurism Certification account registration (including payment or **fee waiver**).
- 3. Amateurism-Only Certification Account: International student-athletes** (first-year students and transfers) must have their amateurism status certified by the Eligibility Center in order to compete at an NCAA Division III school. You must have completed the Amateurism-Only Certification account registration (including payment or **fee waiver**) to be eligible to practice or compete at a Division III school. See **page 28** for more information.

This account may also be right for domestic student-athletes transferring from a two-year school to an NCAA Division I or II school who have not previously been certified by the Eligibility Center. These students should speak with the compliance staff at the NCAA school they plan to attend to determine which account type is required.

NCAA ELIGIBILITY CENTER ACCOUNT TYPES			
In which division do you plan to compete?	Academic and Amateurism Certification Account	Amateurism-Only Certification Account	Profile Page* Account
Division I			
Any recent high school graduate (domestic or international), first-time enrolling at NCAA school.	✓		
Transferring from a two- or four-year college or university. Check with compliance office at the school you may attend.	✓	OR	✓
Division II			
Any recent high school graduate (domestic or international), first-time enrolling at NCAA school.	✓		
Transferring from a two- or four-year college or university. Check with compliance at the school you may attend.	✓	OR	✓
Division III			
Recent high school graduate (domestic only), first-time enrolling at NCAA school.			✓
Recent high school graduate (international only), first-time enrolling at NCAA school.		✓	
Transferring from a two- or four-year college or university, attended domestic high school(s) only.			✓
Transferring from a two- or four-year college or university, attended at least one international high school.		✓	
Division Undecided/Unknown			
Never enrolled full time at a two- or four-year college or university. Best for younger students or before recruiting begins. Can be transitioned to a Certification account when needed.			✓

Once you have determined the right account for you, visit eligibilitycenter.org to start your account. A list of information you will need to complete your account is outlined on **page 14**. For a Profile Page account, please allow 15 minutes to complete. For Certification accounts, please allow between 30 and 45 minutes to complete. If you need to exit and come back at a later time, you can save and exit once your account is created.

***Unsure which account type you need?** We recommend starting with our free Profile Page account, then consulting with the compliance office at the NCAA school you may attend. If you need additional assistance, contact the Eligibility Center's Customer Service team at 877-262-1492, 9 a.m. to 5 p.m. Eastern time Monday-Friday for assistance.

HAVE ELIGIBILITY OR REGISTRATION QUESTIONS?

If you have questions about initial eligibility or the registration process not addressed within this guide, reach out to us! We're here to guide you through your journey. Here's some additional sources of information that may help:

- » Search our frequently asked questions at ncaa.org/studentfaq.
- » *Domestic students and Canadian students (except Quebec)*: Call us toll-free at 877-262-1492, 9 a.m. to 5 p.m. Eastern time Monday-Friday.
- » *International students*: Use our [International Contact Form \(ncaa.org/contactinternational\)](https://ncaa.org/contactinternational) to submit questions.

ELIGIBILITY CENTER REGISTRATION ESSENTIALS

Below are some items you should have with you as you create an account at eligibilitycenter.org:

VALID EMAIL FOR STUDENT

To register, you need a valid email address that you check regularly and will have access to **after** high school. The NCAA Eligibility Center uses email to update you about your account throughout the process. **Note:** If you have a sibling who has previously registered, you will need to use a different email address than the one in your sibling's account.

BASIC STUDENT PERSONAL INFORMATION

This includes information such as your name, gender, date of birth, primary and secondary contact information, address and mobile number for texting.

BASIC STUDENT EDUCATION HISTORY

We will ask you to provide details about all secondary and high schools and additional programs you have attended in the United States and internationally. Be sure to include all schools, regardless of whether you received grades or credits. If you attended ninth grade at a junior high school located in the same school system in which you later attended high school, do not list the ninth-grade school.

STUDENT SPORTS PARTICIPATION HISTORY

Select the sport(s) you plan to participate in at an NCAA school. For **Certification accounts**, we will ask you to provide details for any expenses or

awards you received, any teams you have practiced or played with or certain events in which you participated. We also ask about any individuals who have advised you or marketed your skills in a particular sport. This information helps the Eligibility Center certify your amateur status once you **request your final amateurism certification**.

PAYMENT (CERTIFICATION ACCOUNTS ONLY)

Your Academic and Amateurism or Amateurism-Only Certification account registration is complete only after your registration fee is paid (or upon submission of a **fee waiver**, if you are eligible). You may pay online by debit, credit card or echeck. For the Academic and Amateurism Certification account, the fee for college-bound student-athletes attending a high school in the United States, a **U.S. territory** or Canada is \$100; the fee for international students is \$160. For students for which an Amateurism-Only Certification account is the right choice, the fee for all students is \$70. Profile Page accounts do not have a fee.

*All fees are nonrefundable 30 days after the fee is paid for your Certification account. If you completed a duplicate registration and paid your registration fee twice, you may be eligible for a refund of the duplicate registration fee. To receive a refund, you will need to complete and submit an **NCAA refund form**.*

FEE WAIVERS

If you are unable to pay the registration fee for the NCAA Eligibility Center due to financial considerations, there is an option in the Payment section of your Eligibility Center account to indicate you are eligible to receive a **fee waiver**. You are eligible for an Eligibility Center fee waiver if you meet any of the following criteria:

- » You are enrolled in or eligible to participate in the Federal Free or Reduced-Price Lunch program (FRPL).
- » You have received or are eligible to receive an SAT or ACT fee waiver.
- » Your annual family income falls within the **income eligibility guidelines** set by the USDA Food and Nutrition Service.
- » Your family receives public assistance (e.g., SSI, SNAP).
- » You are enrolled in a government program that aids students from low-income families (e.g., GEAR UP, TRIO, Upward Bound).
- » You live in government-subsidized public housing, a foster home or are homeless.
- » You are a ward of the state or an orphan.
- » You have applied to FAFSA and have received or are eligible for a Pell Grant.
- » A school or government official can attest to your economic need.

If you meet any of the above criteria and have attended a **U.S. high school**, please ask your high school counselor to confirm your fee waiver eligibility through the Eligibility Center's High School Portal after you have completed your Certification account registration.

If you meet the above criteria and have not attended a U.S. high school (e.g., **international students**, **home school students**), a **task** will be assigned to your Eligibility Center account with additional instructions for completing the fee waiver requirement.

TEST SCORES

Every time you register for the **SAT** or **ACT**, use code **9999** to send your scores directly to the Eligibility Center from the testing agency. More information regarding the impact of COVID-19 and test scores can be found at on.ncaa.com/COVID19_Spring2023.

Note:

- » Test scores on transcripts CANNOT be used in your academic certification.
- » The Eligibility Center does not accept SAT subject test scores.
- » The Eligibility Center does not accept TOEFL (Test of English as a Foreign Language) scores.

SAT

A combined SAT score is calculated by adding your math and critical reading subscores.

ACT

An ACT sum score is calculated by adding your English, math, reading and science subscores.

SLIDING SCALES

On our sliding scale, you can see your SAT or ACT score and the **core-course GPA** required for that score.

- » For the Division I sliding scale, [see page 22](#).
- » For the Division II sliding scale, [see page 26](#).

Did you take the SAT/ACT more than once? You may take the SAT or ACT an unlimited number of times before you enroll full time in college. If you take either test more than once, the best subscore from each test is used to give you the best possible score.

We will use your highest SAT and/or ACT score in your academic certification to provide you the best result possible.

PUERTO RICO

If you plan to enroll in a **Division II school** in Puerto Rico, you may use a minimum combined score on the Prueba de Aptitud Académica verbal and math reasoning sections of 730 to satisfy the test-score requirement. For more information, visit ncaa.org/student-athletes/future/puerto-rico.

TESTING DATES

The Eligibility Center accepts national SAT and ACT exams and state-administered ACT exams. Domestic testing dates apply to the U.S., U.S. territories, Puerto Rico and Canada. All others are under the international dates.

- » For information on SAT testing dates visit on.ncaa.com/SATDates.
- » For information on ACT testing dates visit on.ncaa.com/ACTReg.

TRANSCRIPTS

After completing four semesters of high school, ask your high school counselor to upload an official transcript to your NCAA Eligibility Center account. If you have attended more than one high school or took courses from more than one program, the Eligibility Center needs an official transcript from all high school(s) or program(s) you attended. You will also need to ask your high school counselor to send your six-semester and final transcript with proof of graduation once you have completed high school. **Note:** The Eligibility Center does not accept grades from one high school or program transcribed on another high school's transcript.

High schools have the capability to upload transcripts directly to a student's account for free from the High School Portal. As with other electronic transcript providers, this process is much quicker than using the U.S. Postal Service or any overnight delivery method. Students should contact their high school counselor to ask for their transcript to be uploaded or sent electronically through one of the approved e-transcript providers listed below:

- » Cialfo
- » Credentials/eScrip-Safe
- » National Student Clearinghouse
- » National Transcript Center
- » Naviance
- » NeedMyTranscript
- » Parchment (Docufide)
- » SCOIR
- » Scribbles Software
- » State of Georgia comes in DIRECT
- » USMO ET (Speede)
- » XAP

To send a transcript by U.S. mail or through an overnight or express delivery service, use the appropriate address on [page 3](#).

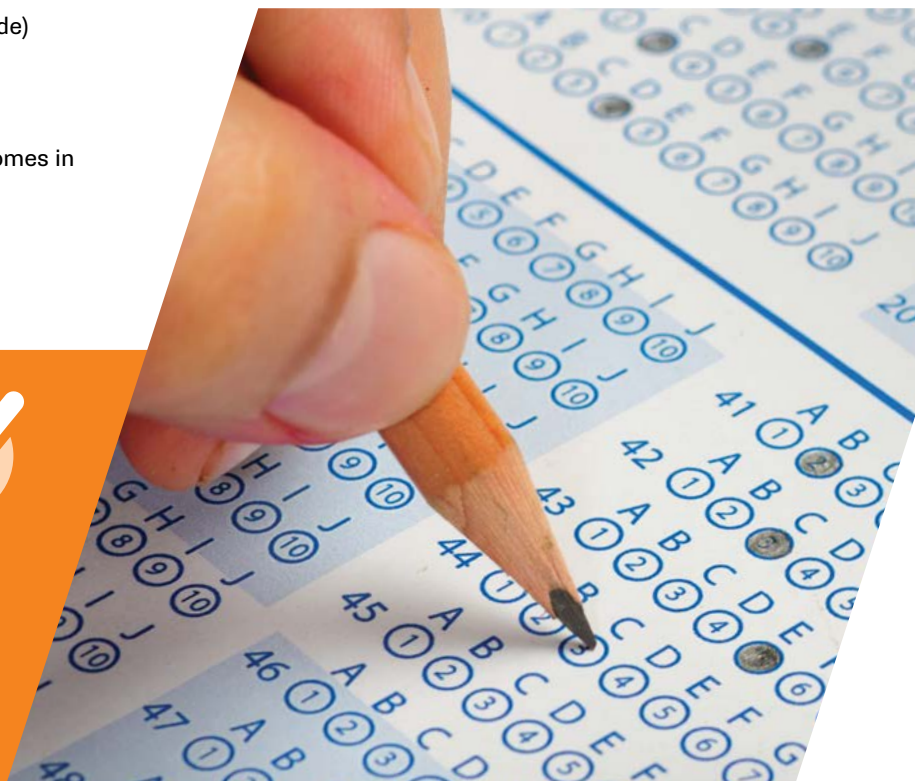
- » *International students:* For information on proper submission procedures for transcripts and academic records, [see page 31](#) or visit ncaa.org/international.

Note: Some approved programs that have a list of NCAA-approved courses are not credit-awarding institutions and, therefore, do not produce official transcripts. If you attend an approved program that does not award credit, a grade report from the program should be submitted.

For information on how COVID-19 has impacted procedures for submitting transcripts, visit on.ncaa.com/COVID19_Spring2023.

REMEMBER

If you have attended more than one high school or took courses from more than one program, the NCAA Eligibility Center needs an official transcript from EACH high school or program.



EQUIVALENCY TESTS/DIPLOMAS

A state high school equivalency test (e.g., General Educational Development) may be accepted as proof of graduation under certain conditions, but it will not satisfy requirements for core courses, [core-course GPA](#) or SAT/ACT scores. The equivalency test may be accepted as proof of graduation if taken after the graduation date of your class

and before full-time enrollment into any college or university. You will need to mail an official copy of the applicable certificate along with your state high school-equivalency test scores to the Eligibility Center. Contact your state education agency to request the certificate and test scores to be sent to the Eligibility Center.

WHAT IS A CORE COURSE?

NCAA schools require college-bound student-athletes to build a foundation of high school courses (**core courses**) to prepare them for the academic expectations in college.

For a high school class to be an NCAA-approved core course, it *must* meet these conditions:

1. Be a four-year college preparatory course in one of these subject areas:
 - » English.
 - » Math (Algebra I or higher).
 - » Science.
 - » Social science.
 - » World language.
 - » Nondoctrinal religion/philosophy.
2. Be taught by a qualified instructor.
3. Be taught at or above your high school's regular academic level.
4. Receive credit toward high school graduation and appear on an official transcript with course title, grade and credit awarded.

Approved classes are added to **your high school's list** of NCAA-approved core courses. Make sure you are taking courses on the approved list; ask your high school counselor if you need help.

WHAT IS NOT A CORE COURSE?

Not all high school classes are NCAA-approved core courses. Some examples of courses that are not NCAA-approved core courses include:

- » Courses in noncore areas, such as driver education, typing, art, music, physical education or welding.
- » Courses that prepare students for the world of work or life, or for a two-year college or technical school, such as personal finance, consumer education or tech prep.
- » Courses taught below grade level, at a slower pace or with less rigor or depth, such as basic, essential, fundamental or foundational courses.
- » Credit-by-exam courses.

CORE-COURSE CREDITS

You can earn credit for a core course only once. If you take a course that repeats the content of another core course, you earn credit for only one of these courses, and the higher grade counts toward your **core-course GPA**. For more information on core-course credits, visit ncaa.org/student-athletes/future/core-courses.

COURSES TAKEN BEFORE HIGH SCHOOL

If you take a high school class such as Algebra I or Spanish I before high school/ninth year, the class may count toward your 16 core-course credits requirement if it appears on your high school's list of NCAA-approved core courses and is shown on your high school transcript with grade and credit.

COURSES TAKEN AFTER HIGH SCHOOL

For information about courses taken after high school, [see page 22](#) for Division I or [page 25](#) for Division II.

COLLEGE COURSES, DUAL-ENROLLMENT COURSES AND DUAL-CREDIT COURSES

College courses may be used to satisfy NCAA core-course requirements if the courses are awarded a grade and credit by the high school for any student and meet all other requirements for core courses. College courses must be placed on the student's high school transcript with clarification of college completion.

REMEMBER



Find your high school's list of NCAA-approved core courses at eligibilitycenter.org/courselist.



NONTRADITIONAL AND ONLINE COURSES

Nontraditional courses are taught online or through distance learning, hybrid/blended, independent study, individualized instruction, correspondence or similar means.

Generally, for a nontraditional course to count as an NCAA-approved core course, it must meet all of the following requirements:

- » The course must meet all requirements for an NCAA-approved core course.
- » All students in the course must have regular instructor-led interaction for the purpose of instruction, evaluation and assistance for the duration of the course. This may include, for example, exchanging emails between the student and teacher, online chats, phone calls, feedback on assignments and the opportunity for the teacher to engage the student in individual or group instruction.
- » The course must have a defined time period for completion. For example, it should be clear how long students are required to be enrolled and working in the course and how long a school would permit a student to work on a single nontraditional course.
- » Student work (e.g., exams, papers, assignments) must be available for evaluation and validation.
- » The course should be clearly identified as nontraditional on the student's official high school transcript.

A nontraditional course may not be approved for any of the following reasons:

- » Does not have teacher-based instruction.
- » Does not require regular and ongoing instructor-led interaction between the student and teacher.
- » Does not require students to complete the entire course.
- » Does not prepare students for four-year college class work.
- » Does not have official student grade records.
- » Does not meet NCAA core-course requirements.

When viewing your [school/program's list](#) of NCAA-approved core courses you will find information about any nontraditional programs or courses in the "Additional Information" box as seen below.

ADDITIONAL INFORMATION

Coursework from this school/program meets NCAA nontraditional core-course legislation.

For information on how COVID-19 has impacted nontraditional and online classes, visit on.ncaa.com/COVID19_Spring2023.



REMEMBER



Log in to your NCAA Eligibility Center account frequently to update your school information if you take courses from additional academic programs.

To find out if a nontraditional program or course is approved, search for the school/program on eligibilitycenter.org/courselist and review the "Additional Information" box.

GRADE-POINT AVERAGE

The NCAA Eligibility Center calculates your **core-course grade-point average** based on the grades you earn in NCAA-approved core courses. Only your best grades from the required number of NCAA core courses will be used. This means that the cumulative GPA listed on your high school transcript could be different than the NCAA core-course GPA used in your certification. Your core-course GPA is based solely on the grades you received in NCAA-approved core courses. To find your high school's list of NCAA-approved core courses, visit eligibilitycenter.org/courselist.

Your core-course GPA is calculated on a 4.0 scale. Numeric grades such as 92 or 87 are changed to letter grades, such as A or B. As part of this calculation, each grade received is assigned “quality points,” as shown in the scale below.

The Eligibility Center does not use plus or minus grades when calculating your core-course GPA. For example, grades of B+, B and B- will each be worth three quality points. Weighted honors or advanced placement courses may improve your core-course GPA, but your high school must notify the Eligibility Center that it awards weighted grades in these classes.

In “Pass/Fail” grading situations, the Eligibility Center will assign your high school's lowest passing grade for a course in which you received a “Pass” grade. For most high schools, the lowest passing grade is a D, so the Eligibility Center generally assigns a D as a passing grade. For information on the impact of COVID-19 on “Pass/Fail” grades, visit on.ncaa.com/COVID19_Spring2023.

CALCULATING YOUR QUALITY POINTS

In order to determine your quality points earned for each course, multiply the quality points for the grade by the amount of credit earned.

Examples:

- » An A grade (4 points) for a trimester course (0.34 unit):
4 points x 0.34 unit = 1.36 total quality points
- » An A grade (4 points) for a semester course (0.50 unit):
4 points x 0.50 unit = 2.00 total quality points
- » An A grade (4 points) for a full-year course (1.00 unit):
4 points x 1.00 unit = 4.00 quality points

Use the worksheets on [pages 23](#) and [27](#) to help determine your core-course GPA.

QUALITY POINTS

- A = 4 points
- B = 3 points
- C = 2 points
- D = 1 point

UNITS OF CREDIT

- 1 quarter unit = 0.25 unit
- 1 trimester unit = 0.34 unit
- 1 semester unit = 0.50 unit
- 1 year = 1 unit

QUESTIONS TO ASK

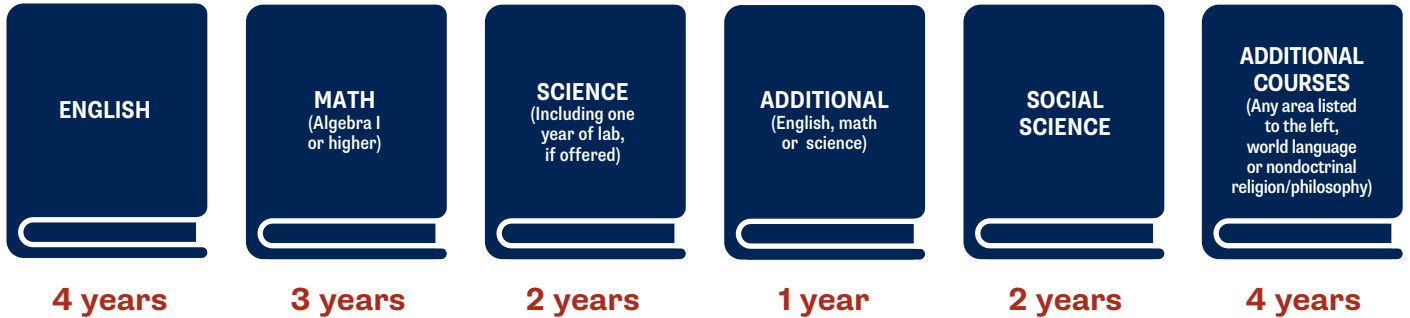
While you are calculating your quality points, consider asking questions about these topics to learn more about the school, athletics program and life on campus. You also can get suggestions of questions to ask coaches and administrators at ncaa.org/student-athletes/future/choosing-college. In addition to receiving your academic and amateurism certification from the Eligibility Center, you also must apply and be accepted to your NCAA school before you can compete on campus.

- » Academic resources.
- » Scholarship renewals.
- » Financial aid and cost of attendance.
- » Admissions requirements.
- » Study abroad/internships.
- » Athletic training and medical expenses.
- » Degree programs and graduation rates.
- » Team time demands.
- » On-campus housing.
- » Coaching philosophy and style.
- » Injuries and rehabilitation.
- » Graduation rates.
- » Schedule planning and time management.
- » Playing time.
- » Mental health resources.
- » Degree completion support.
- » Additional team requirements.
- » Access to extracurricular activities.
- » Pursuing chosen academic major.

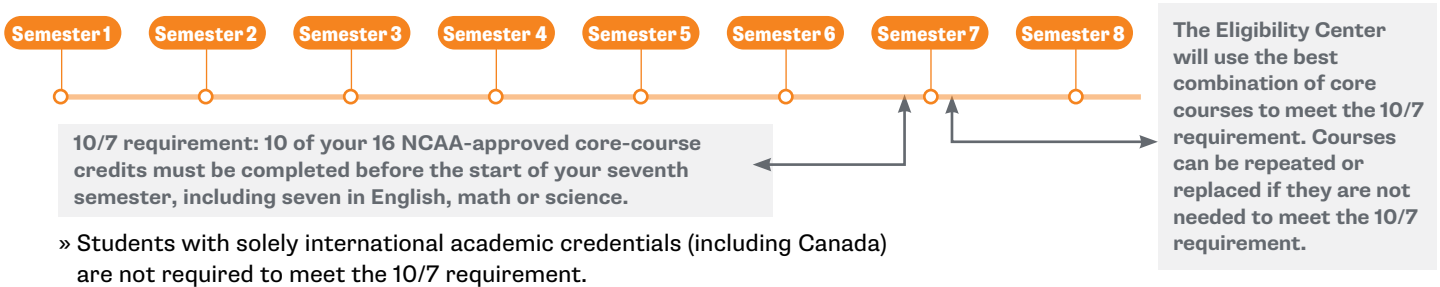
DIVISION I ACADEMIC STANDARDS

Division I schools require college-bound student-athletes to meet academic standards for NCAA-approved core courses, **core-course GPA** and test scores. To be eligible to practice, compete and receive an athletics scholarship in your first full-time year at a Division I school, you must meet all of the following requirements:

1. Earn 16 NCAA-approved core-course credits in the following areas:



2. Complete 10 of your 16 NCAA-approved core-course credits, including seven in English, math or science, before the start of the seventh semester. Once you begin your seventh semester, any course that is needed to meet the 10/7 requirement cannot be replaced or repeated.



3. Complete your 16 NCAA-approved core-course credits in eight academic semesters or four consecutive academic years from the start of ninth grade. If you graduate from high school early, you still must meet core-course requirements.

4. Earn a corresponding test score that matches your core-course GPA (minimum 2.3) on the Division I sliding scale ([see page 22](#)).
More information regarding the impact of COVID-19 and test scores can be found at on.ncaa.com/COVID19_Spring2023.

5. Submit your final transcript with proof of graduation to the Eligibility Center.

How to plan your high school courses to meet the 16 core-course requirement:

$$4 \times 4 = 16$$

9th GRADE

- (1) English
- (1) Math
- (1) Science
- (1) Social Science and/or additional

4 CORE COURSES

10th GRADE

- (1) English
- (1) Math
- (1) Science
- (1) Social Science and/or additional

4 CORE COURSES

11th GRADE

- (1) English
- (1) Math
- (1) Science
- (1) Social Science and/or additional

4 CORE COURSES

12th GRADE

- (1) English
- (1) Math
- (1) Science
- (1) Social Science and/or additional

4 CORE COURSES

ACADEMIC CERTIFICATION DECISIONS

For Academic and Amateurism Certification accounts, an academic certification will be conducted to determine if you meet Division I academic standards. Academic certifications are required for all college-bound student-athletes planning to compete at a Division I school. (An amateurism certification is also required, and is included as part of an Academic and Amateurism Certification account; see page 28.) The following items are required to complete your academic certification:

- » Official transcripts from **all** high schools attended.
- » **Test scores.** More information regarding the impact of COVID-19 and test scores can be found at on.ncaa.com/COVID19_Spring2023.
- » Final **official transcript** with proof of graduation.
- » No open academic tasks in your NCAA Eligibility Center Certification account (see page 13).
- » Be on a Division I school's **institutional request list**.

Being placed on a Division I institutional request list means you are being recruited and notifies the Eligibility Center to complete an academic evaluation for you after all of your required documents have been submitted.

If you are being recruited by a **Division I school**, below are the most common decisions you may receive once a certification has been completed.



EARLY ACADEMIC QUALIFIER

If you meet specific criteria after six semesters of high school, you may be deemed an early academic qualifier for Division I and may practice, compete and receive an athletics scholarship during your first year of full-time enrollment. To be an early academic qualifier, you will need:

- » A minimum SAT combined score (math and critical reading) of 980 or ACT sum score of 75.
- » A **core-course GPA** of 3.0 or higher in a minimum of 14 NCAA-approved core-course credits in the following areas:
 - Three years of English.
 - Two years of math.
 - Two years of science.
 - Two additional years of English, math or science.
 - Five additional core courses in any area.

A final high school transcript must be submitted to the Eligibility Center after high school graduation for all early academic qualifiers.

QUALIFIER

You may practice, compete and receive an athletics scholarship during your first year of full-time enrollment at an NCAA Division I school.

ACADEMIC REDSHIRT

You may practice during your first regular academic term and receive an athletics scholarship during your first year of full-time enrollment but may **NOT** compete during your first year of enrollment. You must pass either eight quarter or nine semester hours to practice in the next term.

NONQUALIFIER

You will not be able to practice, compete or receive an athletics scholarship during your first year of enrollment at a Division I school.

WHAT IF I DON'T GRADUATE ON TIME?

In Division I, if you do not graduate on time (in four years/eight semesters), the Eligibility Center will still use your grades and coursework for the first four years/eight semesters for your certification. You will still need to provide proof of graduation (once you graduate) and you may not use any coursework taken after your high school graduation toward your certification.

WHAT IF I DON'T MEET DIVISION I STANDARDS?

If you have not met all of the Division I academic standards, you may not compete in your first year at a Division I school.

However, if you qualify as an academic redshirt, you may practice during your first term in college and receive an athletics scholarship for the entire year.

To qualify as an academic redshirt, you must:

- » Earn 16 NCAA-approved core-course credits.
- » Earn a corresponding test score that matches your **core-course GPA** (minimum 2.0) on the Division I sliding scale (see page 22).
- » Submit your final transcript with proof of graduation to the Eligibility Center.

COURSES TAKEN AFTER HIGH SCHOOL

For Division I, only courses completed in your first eight semesters will be used in your academic certification. If you graduate from high school on time (in eight semesters) with your incoming ninth-grade class, you may use one core-course unit completed in the year after graduation (summer or academic year) and before enrolling full time at any college or university. You may complete the core course at a location other than the high school from which you graduated as long as the course is taken prior to full-time enrollment at any college or university.

A college course taken after high school graduation may be used toward your initial eligibility and awarded 0.5 units from

your college transcript (unless awarded one full unit on your home high school transcript). It must appear on your home high school transcript with grade and credit.

An additional core-course unit taken after on-time high school graduation cannot replace a course used to meet the core-course progression (10/7) requirement, but an additional core course after on-time graduation may replace one of the remaining six core-course units necessary to meet core-course requirements. For more information on the impact of COVID-19 and initial-eligibility requirements, visit on.ncaa.com/COVID19_Spring2023.

DIVISION I SLIDING SCALE

Division I uses a sliding scale to match your test score(s) and **core-course GPA** to determine eligibility. The sliding scale balances your test score with your core-course GPA. Find more information about test scores on [page 15](#) or visit ncaa.org/test-scores. More information regarding the impact of COVID-19 and test scores can be found at on.ncaa.com/COVID19_Spring2023.

DIVISION I QUALIFIER SLIDING SCALE					
Core GPA	SAT*	ACT Sum*	Core GPA	SAT*	ACT Sum*
3.550	400	37	2.750	810	59
3.525	410	38	2.725	820	60
3.500	430	39	2.700	830	61
3.475	440	40	2.675	840	61
3.450	460	41	2.650	850	62
3.425	470	41	2.625	860	63
3.400	490	42	2.600	860	64
3.375	500	42	2.575	870	65
3.350	520	43	2.550	880	66
3.325	530	44	2.525	890	67
3.300	550	44	2.500	900	68
3.275	560	45	2.475	910	69
3.250	580	46	2.450	920	70
3.225	590	46	2.425	930	70
3.200	600	47	2.400	940	71
3.175	620	47	2.375	950	72
3.150	630	48	2.350	960	73
3.125	650	49	2.325	970	74
3.100	660	49	2.300	980	75
3.075	680	50	2.299	990	76
3.050	690	50	2.275	990	76
3.025	710	51	2.250	1000	77
3.000	720	52	2.225	1010	78
2.975	730	52	2.200	1020	79
2.950	740	53	2.175	1030	80
2.925	750	53	2.150	1040	81
2.900	750	54	2.125	1050	82
2.875	760	55	2.100	1060	83
2.850	770	56	2.075	1070	84
2.825	780	56	2.050	1080	85
2.800	790	57	2.025	1090	86
2.775	800	58	2.000	1100	86


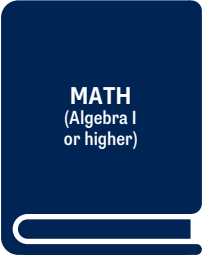

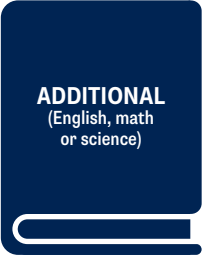

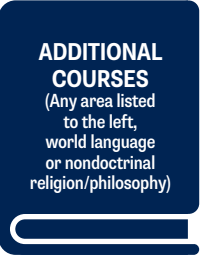
ACADEMIC REDSHIRT

DIVISION II ACADEMIC STANDARDS

Division II schools require college-bound student-athletes to meet academic standards for NCAA-approved core courses, **core-course GPA** and test scores. To be eligible to practice, compete and receive an athletics scholarship in your first full-time year at a Division II school, you must meet *all* of the following requirements:

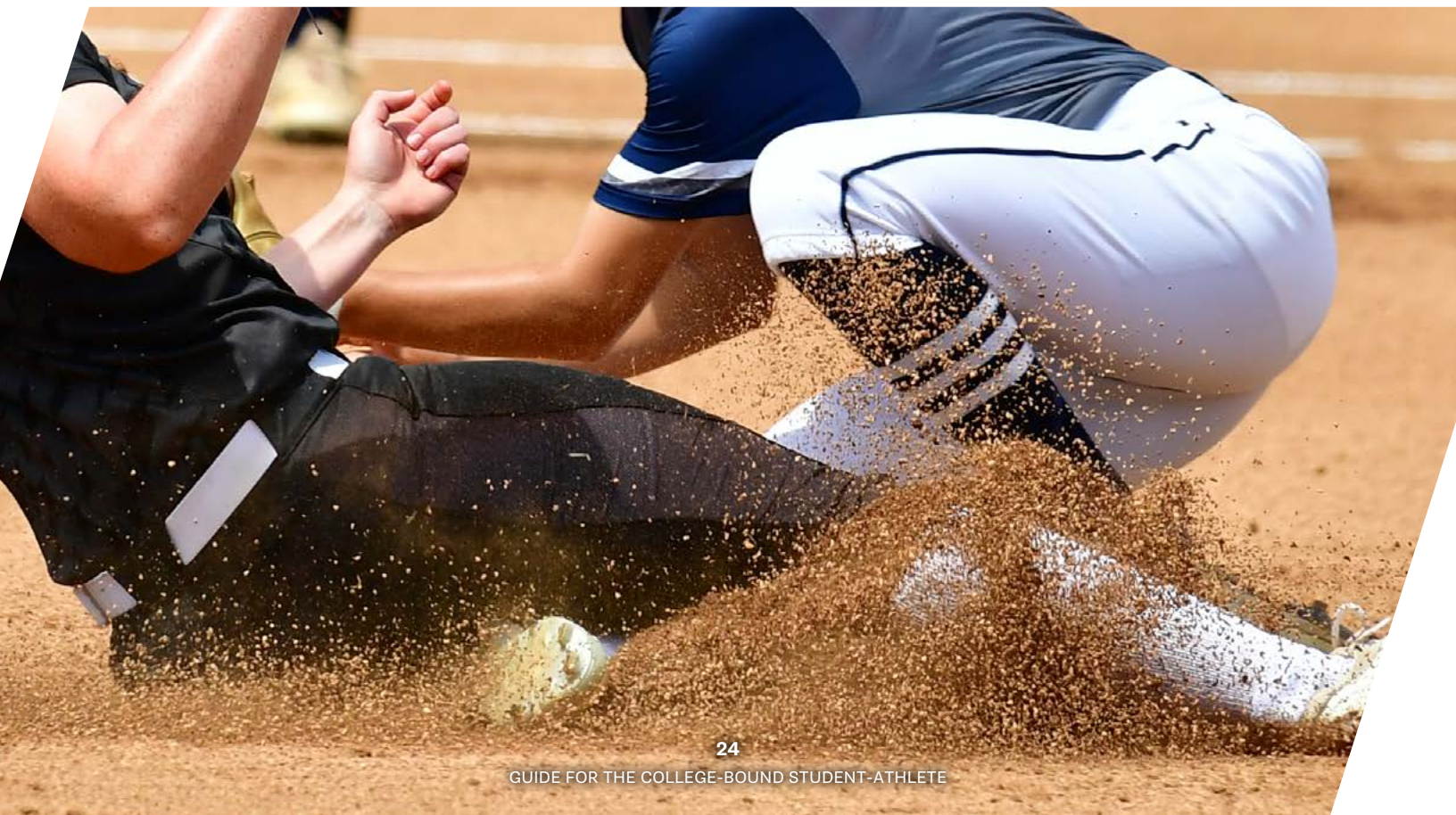


1. Earn 16 NCAA-approved core-course credits in the following areas:

 <p>ENGLISH</p>	 <p>MATH (Algebra I or higher)</p>	 <p>SCIENCE (Including one year of lab, if offered)</p>	 <p>ADDITIONAL (English, math or science)</p>	 <p>SOCIAL SCIENCE</p>	 <p>ADDITIONAL COURSES (Any area listed to the left, world language or non-doctrinal religion/philosophy)</p>
3 years	2 years	2 years	3 years	2 years	4 years

2. Earn a corresponding test score that matches your core-course GPA (minimum 2.2) on the Division II qualifier sliding scale (see page 26). More information regarding the impact of COVID-19 and test scores can be found at on.ncaa.com/COVID19_Spring2023.
3. Submit your final transcript with proof of graduation to the NCAA Eligibility Center.

Student-athletes enrolling at an NCAA member school Aug. 1, 2021, or later who do not meet Division II qualifier standards will be deemed partial qualifiers. All Division II partial qualifiers may practice and receive an athletics scholarship, but may NOT compete, during their first year of full-time enrollment at a Division II school.



ACADEMIC CERTIFICATION DECISIONS

For Academic and Amateurism Certification accounts, an academic certification will be conducted to determine if you meet Division II academic standards. Academic certifications are required for all college-bound student-athletes planning to compete at a Division II school. (An amateurism certification is required, and is included as part of an Academic and Amateurism Certification account as well as an Amateurism-Only Certification; [see page 28](#).) The following items are required to complete your academic certification:

- » Official transcripts from **all** high schools attended.
- » **Test scores**. More information regarding the impact of COVID-19 and test scores can be found at on.ncaa.com/COVID19_Spring2023.
- » Final **official transcript** with proof of graduation.
- » No open academic tasks in your NCAA Eligibility Center Certification account ([see page 13](#)).
- » Be on a Division II school's **institutional request list**.

Being placed on a Division II school's **institutional request list** means you are being recruited and notifies the Eligibility Center to complete an academic evaluation for you after all of your required documents have been submitted.

If you are being recruited by a **Division II school**, below are the most common decisions you may receive once a certification has been completed.

EARLY ACADEMIC QUALIFIER

If you meet specific criteria after six semesters of high school, you may be deemed an early academic qualifier for Division II and may practice, compete and receive an athletics scholarship during your first year of full-time enrollment. To be an early academic qualifier, you will need:

- » A minimum SAT combined score (math and critical reading) of 900 or ACT sum score of 68.

A final high school transcript must be submitted to the Eligibility Center after high school graduation for all early academic qualifiers.

- » A **core-course GPA** of 2.5 or higher in a minimum of 14 NCAA-approved core-course credits in the following areas:
 - Three years of English.
 - Three years of math.
 - Two years of science.
 - Six additional core courses in any area.

QUALIFIER

You may practice, compete and receive an athletics scholarship during your first year of full-time enrollment at an NCAA Division II school.

PARTIAL QUALIFIER

You may practice and receive an athletics scholarship, but may NOT compete, during your first year of full-time enrollment at an NCAA Division II school.

WHAT IF I DON'T MEET DIVISION II STANDARDS?

If you have not met all of the Division II academic standards, you may not compete in your first year at a Division II school. However, you will be deemed a partial qualifier. All Division II partial qualifiers may practice and receive an athletics scholarship, but may NOT compete, during their first year of full-time enrollment at a Division II school.

CORE-COURSE TIMELINE

If you plan to compete at a Division II school, you must earn 16 NCAA-approved core-course credits after starting freshman/ninth year and before your first full-time college enrollment.

COURSES TAKEN AFTER HIGH SCHOOL

For Division II, you may use an unlimited number of core courses completed after graduation (summer or academic year) and before enrolling full time at any college or university. You may complete the core course(s) at a location other than the high school from which you graduated. A college course taken after high school graduation may be used toward your initial eligibility and awarded 0.5 credits from your college transcript (unless awarded one full credit on your home high school transcript). It must appear on your home high school transcript with grade and credit.

DIVISION II SLIDING SCALE

Division II uses a sliding scale to match your test score(s) and **core-course GPA** to determine eligibility. The sliding scale balances your test score with your core-course GPA. Find more information about test scores on [page 15](#) or visit ncaa.org/test-scores. More information regarding the impact of COVID-19 and test scores can be found at on.ncaa.com/COVID19_Spring2023.



DIVISION II QUALIFIER SLIDING SCALE

Core GPA	SAT*	ACT Sum*
3.300 & above	400	37
3.275	410	38
3.250	430	39
3.225	440	40
3.200	460	41
3.175	470	41
3.150	490	42
3.125	500	42
3.100	520	43
3.075	530	44
3.050	550	44
3.025	560	45
3.000	580	46
2.975	590	46
2.950	600	47
2.925	620	47
2.900	630	48
2.875	650	49
2.850	660	49
2.825	680	50
2.800	690	50
2.775	710	51
2.750	720	52
2.725	730	52
2.700	740	53
2.675	750	53
2.650	750	54
2.625	760	55
2.600	770	56
2.575	780	56
2.550	790	57
2.525	800	58
2.500	810	59
2.475	820	60
2.450	830	61
2.425	840	61
2.400	850	62
2.375	860	63
2.350	860	64
2.325	870	65
2.300	880	66
2.275	890	67
2.250	900	68
2.225	910	69
2.200	920	70 & above

DIVISION II WORKSHEET

This worksheet is provided to assist you in monitoring your progress in meeting NCAA initial-eligibility standards. The NCAA Eligibility Center will determine your academic status after you graduate. Remember to check [your high school's list](#) of NCAA-approved core courses for the classes you have taken or plan to take.

Use the following scale: A = 4 quality points; B = 3 quality points; C = 2 quality points; D = 1 quality point.

ENGLISH (3 YEARS REQUIRED)					
COURSE TITLE	CREDIT	X	GRADE	=	QUALITY POINTS (MULTIPLY CREDIT BY GRADE)
Example: English 9	0.5		4		(0.5 x 4) = 2
TOTAL ENGLISH CREDITS					TOTAL QUALITY POINTS
MATH (2 YEARS REQUIRED)					
COURSE TITLE	CREDIT	X	GRADE	=	QUALITY POINTS (MULTIPLY CREDIT BY GRADE)
Example: Algebra I	1.0		3		(1.0 x 3) = 3
TOTAL MATH CREDITS					TOTAL QUALITY POINTS
SCIENCE (2 YEARS REQUIRED)					
COURSE TITLE	CREDIT	X	GRADE	=	QUALITY POINTS (MULTIPLY CREDIT BY GRADE)
TOTAL SCIENCE CREDITS					TOTAL QUALITY POINTS
ADDITIONAL YEARS IN ENGLISH, MATH OR SCIENCE (3 YEARS REQUIRED)					
COURSE TITLE	CREDIT	X	GRADE	=	QUALITY POINTS (MULTIPLY CREDIT BY GRADE)
TOTAL ADDITIONAL CREDITS					TOTAL QUALITY POINTS
SOCIAL SCIENCE (2 YEARS REQUIRED)					
COURSE TITLE	CREDIT	X	GRADE	=	QUALITY POINTS (MULTIPLY CREDIT BY GRADE)
TOTAL SOCIAL SCIENCE CREDITS					TOTAL QUALITY POINTS
ADDITIONAL ACADEMIC COURSES (4 YEARS REQUIRED)					
COURSE TITLE	CREDIT	X	GRADE	=	QUALITY POINTS (MULTIPLY CREDIT BY GRADE)
TOTAL ADDITIONAL ACADEMIC CREDITS					TOTAL QUALITY POINTS
TOTAL QUALITY POINTS FROM EACH SUBJECT AREA / TOTAL CREDITS = CORE-COURSE GPA		/		=	
QUALITY POINTS / CREDITS = CORE-COURSE GPA					

DIVISION III REQUIREMENTS

Division III schools provide an integrated environment focusing on academic success while offering a competitive athletics environment. Division III rules minimize potential conflicts between athletics and academics and focus on regional in-season and conference play to maximize academic, co-curricular and extracurricular opportunities. While Division III schools do not offer athletics scholarships, 80% of Division III student-athletes receive some form of merit or need-based financial aid.

While Division III schools set their own admissions and academic requirements, **international student-athletes** (first-year students and transfers) who initially enroll full time

at a Division III school on or after Aug. 1, 2023, are required to complete an Amateurism-Only Certification account. See the Amateurism section below for more information on the Amateurism-Only Certification account, which does not include an academic certification. Contact the Division III school you plan to attend for more information about its academic requirements.



DIVISION III
DISCOVER | DEVELOP | DEDICATE



AMATEURISM

When you register for an Academic and Amateurism or Amateurism-Only Certification account with the NCAA Eligibility Center, you will be asked a series of questions about your **sports participation** to determine your amateur status. In some instances, the Eligibility Center staff may need to gather additional information to evaluate your amateur status.

ISSUES REVIEWED AS PART OF THE AMATEURISM CERTIFICATION PROCESS

- » Delaying your full-time collegiate enrollment to participate in organized competition.
- » Playing with professionals.
- » Signing a contract with a professional team.
- » Participating in tryouts or practices with a professional team.
- » Receiving payment or preferential treatment/benefits for playing sports.
- » Receiving prize money.
- » Receiving benefits from an agent or prospective agent.
- » Involvement with a recruiting service.

REQUESTING FINAL AMATEURISM CERTIFICATION

College-bound student-athletes enrolling for the first time at an NCAA Division I or II school and international students enrolling for the first time at a Division III school must **request their final amateurism certification** before being eligible to compete. (This includes transfers from junior colleges, National Association of Intercollegiate Athletics, international schools or transfers from a Division I, II or III school to a school in a different division. **See page 13** to determine the right Eligibility Center account for your circumstances.) Students must request their final amateurism certification through their Eligibility Center account; the Eligibility Center staff cannot finalize your amateurism certification without your request. **Note:** You can request your final amateurism certification even if other tasks are still open in your account. When you can request your final amateurism certification depends on when you are starting at a Division I, II or III school:

Fall Enrollment: If you are enrolling at a Division I, II or III school for the fall semester, you may request a final amateurism decision on or after April 1 before your enrollment at an NCAA school.

Winter/Spring Enrollment: If you are enrolling at a Division I, II or III school for the spring semester, you may request a final amateurism decision on or after Oct. 1 before your enrollment at an NCAA school.



DELAYED ENROLLMENT (DIVISIONS I AND II ONLY)*

After you graduate high school, you have a certain amount of time – called a “grace period” – to enroll full time at any two-year or four-year college or university. If you do not enroll at the first opportunity after your grace period and continue to compete in organized competition, you will use one season of NCAA eligibility for each calendar year during which you continue to compete. You also may be required to serve an academic year in residence at your NCAA school before you can compete. For more information on delayed enrollment, review the chart on [page 30](#).

The grace period ends on Oct. 1 for fall enrollees and March 1 for winter/spring enrollees. This does not apply to Division I men’s ice hockey and Division I men’s and women’s skiing. Division III student-athletes who plan to enroll at a [Division III school](#) before fall 2023 should discuss delayed enrollment with the school’s compliance office.

ADDITIONAL INFORMATION

Which NCAA Eligibility Center account is right for you? See [page 13](#).

M&W TENNIS		MEN’S ICE HOCKEY		M&W SKIING		ALL OTHER SPORTS	
DI Grace Period*	DII Grace Period*	DI Up to	DII Grace Period*	DI Up to	DII Grace Period*	DI Grace Period*	DII Grace Period*
6 months	12 months	21ST BIRTHDAY	3 YEARS	21ST BIRTHDAY	3 YEARS**	12 months	12 months

*A college-bound student-athlete’s grace period is the period between their expected date of high school graduation and initial full-time collegiate enrollment.

**Competition must be sanctioned by the U.S. Ski and Snowboard Association or its international counterparts.

FREQUENTLY ASKED AMATEURISM QUESTIONS

What is Organized Competition?

For Division I and II schools, competition is considered organized if ANY of the following exist:

- » Official score is kept.
- » Standings or statistics are maintained.
- » Official timer or game officials are used.
- » Admission is charged.
- » Teams are regularly formed or team rosters are predetermined.
- » Team uniforms are used.
- » An individual or team is privately or commercially sponsored.
- » The competition is either directly or indirectly sponsored, promoted or administered by an individual, an organization or any other agency.
- » Division I: The competition is scheduled and publicized in advance.
- » Division II: The competition is scheduled in advance.

Who Is an Agent?

An **agent** is an individual who directly or indirectly represents you by marketing your athletics ability or reputation for financial gain, or attempts to benefit from your enrollment at an educational institution or your potential earnings as a professional athlete. For more information on the NCAA's interim NIL policy, visit on.ncaa.com/NIL-Q&A.

What Is a Professional Team?

A professional team is one that declares itself as professional or provides any player *more* than actual and necessary expenses. Actual and necessary expenses are defined as:

- » Meals and lodging directly tied to competition or practice directly related to the competition.
- » Transportation expenses, such as to and from practice, training or competition.
- » Apparel, equipment and supplies related to competition, or practice directly related to competition.
- » Coaching and instruction, or the use of facilities and entry fees.
- » Health or medical insurance, medical treatment and physical therapy directly associated with an individual's participation on a team or in an event.
- » Other reasonable expenses such as laundry money.

OVERVIEW OF NCAA DIVISION I AND II PRE-ENROLLMENT AMATEURISM BYLAWS

Before initial full-time enrollment at a college or university, may a college-bound student-athlete ...	Permissible in Division I?	Permissible in Division II?
Delay enrollment (grace period)?*	Tennis (men and women): Yes, six months. Men's ice hockey and skiing (men and women): Yes, until 21st birthday. All other sports: Yes, 12 months.	Men's ice hockey and skiing (men and women): Yes, three years.** All other sports: Yes, 12 months.
Use a recruiting or scouting service?	Yes. The fee the service charges cannot be based on receipt or the amount of an athletics scholarship.	Yes. The fee the service charges cannot be based on receipt or the amount of an athletics scholarship.
Receive funding from an outside source?	Yes, if the funding is less than or equal to the student-athlete's actual and necessary expenses related to competition and practice directly associated with competition. Training expenses may only be provided by the U.S. Olympic & Paralympic Committee, appropriate national governing body (or international equivalent organization for international students) or a governmental entity.	Yes.
Receive prize money?	Tennis: Yes, if it does not exceed \$10,000 per calendar year and comes from the sponsor of the event. Once the \$10,000 limit is reached, additional prize money may not exceed actual and necessary expenses for each subsequent event in the calendar year. All other sports: Yes, if it does not exceed actual and necessary expenses for a calendar year and comes from the sponsor of the event.	Precollegiate enrollment - Yes. Precollegiate enrollment - Yes.
Enter into an agreement (verbal or written) with an agent to identify or secure playing opportunities?	Baseball and men's ice hockey: Yes, provided it is before collegiate enrollment AND the individual has already been drafted. The agent may then negotiate with the professional team, provided the individual is not awarded any benefits, pays the going rate for the representation and the agreement is discontinued before enrolling in college. All other sports: No.	No.
Receive benefits from an agent or professional service provider?	No.	No.
Try out with a professional team?	Men's ice hockey and skiing: Yes. May receive actual and necessary expenses for one tryout (up to 48 hours) from each professional team. Tryout may extend past 48 hours if all expenses, including return transportation, are self-funded. Self-financed tryouts may exceed 48 hours. All other sports: Yes. May not exceed actual and necessary expenses.	Precollegiate enrollment - Yes. Precollegiate enrollment - Yes.
Be selected in a professional draft?	Yes. Contact the NCAA or your school's compliance office before entering an opt-in draft.	Yes. Contact the NCAA or your school's compliance office before entering an opt-in draft.

*A college-bound student-athlete's grace period is the period between their expected date of high school graduation and initial full-time collegiate enrollment. The grace period ends on Oct. 1 for fall enrollees and March 1 for winter/spring enrollees. Does not apply to Division I men's ice hockey and Division I men's and women's skiing.

**Competition must be sanctioned by the U.S. Ski and Snowboard Association or its international counterparts.

ADDITIONAL INFORMATION

Learn more about amateurism and recruiting/scouting services at ncaa.org/student-athletes/future/amateurism.



“

Coming from a country where sports are only played at a club level, I was beyond excited to find out I was given an opportunity that allowed me to combine athletics with academics, while also living abroad.

Laura van der Doorn
Field Hockey, Southern
New Hampshire University

”

INTERNATIONAL STUDENTS

An **international student** is one who has taken coursework outside the United States (not including **Department of Defense Dependent Schools or American schools abroad**) at any point from the initial start of school year nine through secondary school graduation. As an international student, you must submit the following information:

- » Transcripts for years nine and up in the native language.
- » Proof of graduation in the native language, which may include certificates, diplomas and/or final leaving exams.
- » Certified line-by-line English translations of these documents if they are issued in a language other than English.

ADDITIONAL INFORMATION

For specific details about the documents you must submit, refer to the current **Guide to International Academic Standards for Athletics Eligibility** or visit the International Student-Athletes page at ncaa.org/international.

In certain situations, the NCAA Eligibility Center may request additional documentation to clarify that your academic information is complete, valid and accurate. The **task list** within your Eligibility Center account is used to communicate these requests, so be sure to check your email frequently for task notifications.

- » For information on **how to submit international documentation** and the impact of COVID-19 on submission procedures, visit on.ncaa.com/COVID19_Spring2023.
- » All documents submitted to the Eligibility Center become the property of the Eligibility Center and cannot be returned. This includes any mailed original documents.

In addition to your academic credentials, students also must submit scores for all SATs or ACTs taken prior to full-time enrollment. Your scores must be sent electronically to the Eligibility Center by the testing agency. When registering for the SAT or ACT, use code **9999** to ensure your test scores are sent directly to your Eligibility Center account. More information regarding the impact of COVID-19 and test scores can be found at on.ncaa.com/COVID19_Spring2023.

Failure to include any of these items will delay the review of your records, so be sure to understand the documents required for the country in which you attended school by reviewing the current **Guide to International Academic Standards for Athletics Eligibility**, available for download at ncaapublications.com, or visit your country's specific information page at ncaa.org/countries.

Need help? For specific questions that you can't find the answer to in our other resources, use our International Contact Form, found at ncaa.org/contactinternational.

HOME SCHOOL STUDENTS

Learning at home is not necessarily the same as being home-schooled. Because of recent growth in online and virtual education, a student may be able to learn at home through an online school with online teachers, which would not be considered a parent-directed tutor.

Courses evaluated as home school courses are those in which a parent or parent-directed tutor:

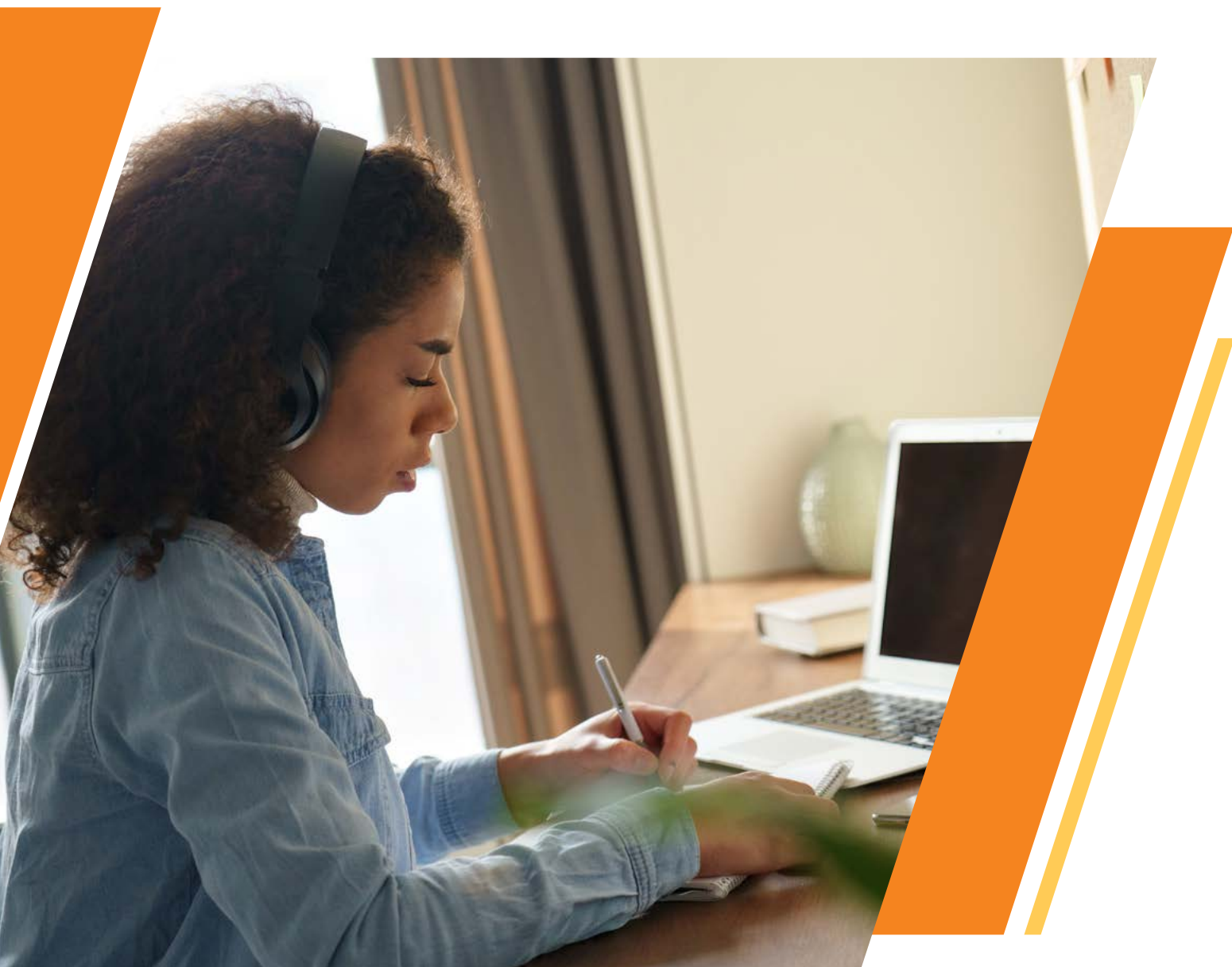
- » Plans and delivers actual instructional activities such as lectures, discussions, tutorials, feedback or assistance.
- » Determines the student's comprehension of the material by grading and evaluating student performance and achievement on assignments and assessments and providing appropriate re-teaching and feedback.

- » Determines the overall grade the student achieved in the course.
- » Places the grade on a transcript or grade report or reports the grade to an approved home school umbrella program.

HOW TO REGISTER

If you are a home school student and want to play NCAA sports at a Division I or II school, you need to register with the NCAA Eligibility Center and meet the same standards as all other students.

Once you have completed your registration, visit ncaa.org/student-athletes/future/home-school-students and download the **Home School Toolkit**. This resource provides you with all of the necessary **home school resources**.



EDUCATION-IMPACTING DISABILITIES

For academic eligibility purposes, the NCAA defines an education-impacting disability as a current impairment that has a substantial educational impact on a student's academic performance and requires accommodation.

Some of the most common EIDs include:

- » Learning disabilities.
- » Attention-deficit/hyperactivity disorder.
- » Mental health conditions.
- » Medical conditions.
- » Deaf or hard of hearing.
- » Autism spectrum disorder.

If you have a documented EID, you must meet the same initial-eligibility standards as other students but may be provided certain accommodations to help meet those standards. For instance, if you have a documented EID, you may be allowed to take classes designed for students with EIDs if the classes appear on [your high school's list](#) of NCAA-approved courses.

SUBMITTING YOUR EID DOCUMENTATION

If you are a student with a documented EID, you only need to alert the NCAA Eligibility Center about your disability if you plan to enroll full time at a Division I or II school and would like to take additional core courses after you graduate high school.

If your EID documentation is approved by the Eligibility Center and you plan to attend a [Division I school](#):

- » You may take up to three additional core courses after graduating high school but before enrolling full time at a Division I school – as long as you graduate from high school in eight consecutive semesters after starting ninth grade.

If your EID documentation is approved by the Eligibility Center and you plan to attend a [Division II school](#):

- » You may take an unlimited number of core courses after starting ninth grade but before enrolling full time at a Division II school.

Information submitted to the NCAA about your EID is **not** released to colleges unless the student-athlete makes a specific written request.

To document your EID with the Eligibility Center, you must submit the following materials:

1. A complete NCAA [EID cover sheet](#).
2. Your NCAA ID, high school graduation year, permanent address and phone number.
3. Current, signed documentation of your diagnosis (including test data) and/or recommendations from the treating professional (e.g., medical doctor, clinical psychologist or other qualified individual).

4. Current copy of your Individualized Education Plan or 504 Plan. If your high school did not provide an IEP or 504 Plan, the high school must submit documentation describing the available accommodations or an explanation of why accommodations were not provided.
5. A signed Buckley Statement form allowing certain individuals to review your EID information and speak on your behalf to the NCAA. A parent or guardian who would like to discuss your EID request with the NCAA must be listed on the Buckley Statement.

The cover sheet and Buckley Statement can be found at ncaa.org/student-athletes/future/education-impacting-disabilities.

WHERE TO SEND YOUR EID DOCUMENTS

NCAA Eligibility Center
EID Services
P.O. Box 7110
Indianapolis, IN 46207-7110

Fax: 317-968-5100

Email: ec-processing@ncaa.org

If approved, you will be notified in writing and provided with additional information about available accommodations.

SAT/ACT EXAM WITH ACCOMMODATIONS

If you have a documented EID, you may also request to take an SAT or ACT exam with accommodations to satisfy test-score requirements by:

- » Registering for accommodations using the directions provided by the SAT or ACT.
- » Following procedures governed by SAT or ACT. The test may not be administered by a member of your high school athletics department or any NCAA school's athletics department.

If you take an SAT or ACT exam with accommodations, you may take the test on a date other than a national testing date, but you still must achieve the required test score.

Your high school counselor can help you register to take an SAT or ACT exam with accommodations. More information regarding the impact of COVID-19 and test scores can be found at on.ncaa.com/COVID19_Spring2023.

IMPORTANT RECRUITING TERMS

Celebratory standardized signing form (a form used by Division III schools): This form is a standard NCAA-provided, nonbinding athletics celebratory signing form after a college-bound student-athlete has been accepted for enrollment at a Division III school.

Contact: A contact happens any time a college coach says more than “Hello” during a face-to-face meeting with you or your family members off the college’s campus.

Contact period: During a contact period, a college coach may have face-to-face contact with you or your family members, watch you compete, visit your high school and call or write to you or your family members.

Dead period: A college coach may not have any face-to-face contact with you or your family members on or off the college campus at any time during a dead period. The coach may call or write you or your family members during this time.

Evaluation: An evaluation happens when a college coach observes you practicing or competing.

Evaluation period: During an evaluation period, a college coach may watch you compete, visit your high school and call or write to you or your family members. However, a college coach may not have face-to-face contact with you or your family members off the college’s campus during an evaluation period.

Financial aid (scholarship): Any money you receive from a college or another source, such as outside loans or grants. Financial aid may be based on athletics ability, financial need, scholarships or academic achievement.

Five-year clock: If you play at a Division I school, you have five calendar years in which to play four seasons of competition. Your five-year clock starts when you enroll as a full-time student at any college. Thereafter, your clock continues, even if you spend an academic year in residence as a result of transferring, decide to redshirt, do not attend school or attend school part time during your college career.

Full-time student: Each school determines what full-time status means. Typically, you are a full-time student if you are enrolled for at least 12 credit hours in a term, but some schools define a full-time student as someone who takes fewer than 12 credit hours in a term.

Institutional request list: An institutional request list is a list of college-bound student-athletes who an NCAA Division I and/or II school is interested in recruiting. The action of adding a college-bound student-athlete to the IRL informs the NCAA Eligibility Center of the school’s interest in having an academic and amateurism certification decision for the student-athlete.

International student: An international student is any student who is enrolled in a secondary school outside the United States, U.S. territories or Canada.

Official commitment: When you officially commit to attend a Division I or II school, you sign a **National Letter of Intent**, agreeing to attend that school for one academic year.

Official visit: During an official visit, the college can pay for transportation to and from the college for you (and up to two family members in Division I basketball and FBS football), lodging and meals (Division I allows for up to three meals per day) for you and up to four family members, as well as reasonable entertainment expenses, including five tickets to a Division I or II home sports event. Before a Division I or II college may invite you on an official visit, you will have to provide the college with a copy of your high school transcript and register for an Academic and Amateurism Certification account with the **Eligibility Center**. In Division I, you may not make an official visit during a recruiting shutdown period or a dead period. In Division II, you may not make an official visit during a dead period.

Quiet period: During this time, a college coach may not have any in-person contact with you or your family members off the college’s campus. A coach may not watch you play or visit your high school during this period. You and your family members may visit a college campus during this time. A coach may call or write to you or your family members during this time.

Recruited: If a college coach contacts you off campus, pays your expenses to visit the campus, or (in Divisions I and II) issues you a **National Letter of Intent** or a written offer of financial aid, you are considered recruited.

Recruiting calendar: NCAA member schools limit recruiting to certain periods during the year. **Recruiting calendars** promote the well-being of college-bound student-athletes and ensure fairness among schools by defining certain periods during the year in which recruiting may or may not occur in a particular sport.

Recruiting shutdown: A recruiting shutdown is a period of time when no forms of recruiting (e.g., contacts, evaluations, official or Division I unofficial visits, correspondence, or making or receiving telephone calls) are permissible.

Season of competition: Generally, NCAA rules say any competition in a season – regardless of the amount of time – counts as having played one season in that sport. If you play any time during a season, regardless of how long you played, it counts as having played for an entire season in that sport. A season starts when you spend one second in competition on the field, court, gym or track. In Division III, you also use a season if you practice at any time after the first contest.

Ten-semester/15-quarter clock: If you play at a Division II or III school, you have the first 10 semesters or 15 quarters in which you are enrolled as a full-time student to complete your four seasons of competition. You use a semester or quarter any time you attend class as a full-time student or are enrolled part time and compete for the school. You do not use a term if you only attend part time with no competition or are not enrolled for a term.

Two-year college: Any school from which students can earn an Associate of Arts, Associate of Science or Associate of Applied Science within two years. Some people call these schools community or junior colleges.

Unofficial visit: Any visit by you and your family members to a college campus paid for by you or your family members. The only expense you may receive from the college is three complimentary admissions to a Division I home athletics contest and one meal on or off campus, or five complimentary admissions to a Division II home athletics contest. You may make as many unofficial visits as you like after the first permissible date in each sport. The only time you cannot talk with a coach during an unofficial visit is during a dead period. In Division I, it is not permissible to make an official visit during a recruiting shutdown period or a dead period. In Division II, you may not make an unofficial visit during a dead period. In Division III, you may receive one on-campus meal as well as admission to a home athletics event for you and those accompanying you.

Verbal commitment: A verbal commitment happens when you verbally agree to play sports for a college before you sign or are eligible to sign a **National Letter of Intent**. The commitment is not binding on you or the school.

Walk-on: Someone who is not typically recruited by a school to participate in sports and does not receive a scholarship from the school, but who becomes a member of one of the school’s athletics teams.

RECRUITING CALENDARS

NCAA member schools limit recruiting to certain periods during the year. Recruiting calendars promote the well-being of college-bound student-athletes and ensure fairness among schools by defining certain periods during the year in which recruiting may or may not occur in a particular sport. Due to the COVID-19 pandemic, recruiting calendars may be adjusted. For the most up-to-date information, visit on.ncaa.com/RecruitCal.

MEN'S BASKETBALL, DIVISION I

RECRUITING METHOD	
Recruiting Materials and Electronic Correspondence (e.g., recruiting letters, social media messages, text messages)	You may receive brochures for camps, questionnaires, NCAA materials and nonathletics recruiting publications at any time. A coach may begin sending you recruiting materials and electronic correspondence June 15 between your sophomore/10th and junior/11th year of high school.
Phone Calls to a Coach	You or your family may call a coach at any time.
Phone Calls From a Coach	A coach may call you or your family beginning June 15 between your sophomore/10th and junior/11th year of high school.
Off-Campus Contact	A college coach may have contact with you or your family off the college's campus beginning the first day of your junior/11th year of in high school. Contacts made in your junior/11th year may occur at your educational institution except for during the April recruiting periods, when off-campus recruiting contacts may be made at your educational institution <i>or</i> residence.
Unofficial Visit	You and your family may visit a college at your own expense beginning Aug. 1 of your sophomore/10th year of high school.
Official Visit	A college may pay for you and two family members to visit the college beginning Aug. 1 of your junior/11th year of high school. Up to five official visits can be taken between Aug. 1 of your junior/11th year and the end of your junior/11th year. An additional five official visits may be taken between the day after the end of your junior/11th year and Oct. 15 after graduation from high school.

WOMEN'S BASKETBALL, DIVISION I

RECRUITING METHOD	
Recruiting Materials and Electronic Correspondence (e.g., recruiting letters, social media messages, text messages)	You may receive brochures for camps, questionnaires, NCAA materials and nonathletics recruiting publications at any time. A coach may begin sending you recruiting materials and electronic correspondence June 1 at the end of your sophomore/10th year of high school.
Phone Calls to a Coach	You or your family may call a coach at any time.
Phone Calls From a Coach	A coach may call you or your family beginning June 1 at the end of your sophomore/10th year of high school.
Off-Campus Contact	Off-campus in-person recruiting contacts cannot occur before Sept. 1 of your senior/12th year of high school. Contacts may occur only at your educational institution or residence.
Unofficial Visit	You and your family may visit a college at your own expense at any time. Contact with coaches can occur consistent with recruiting calendar regulations.
Official Visit	A college may pay for you and two family members to visit the college beginning Jan. 1 of your junior/11th year of high school.

FOOTBALL, DIVISION I

RECRUITING METHOD	
Recruiting Materials and Electronic Correspondence (e.g., recruiting letters, social media messages, text messages)	You may receive brochures for camps, questionnaires, NCAA materials and nonathletics recruiting publications at any time. A coach may begin sending you recruiting materials and electronic correspondence Sept. 1 of your junior/11th year of high school.
Phone Calls to a Coach	You or your family may call a coach at any time.
Phone Calls From a Coach	A coach may call you one time between April 15 and May 31 during your junior/11th year of high school. Beginning Sept. 1 of your senior/12th year, a coach may call you one time per week outside a contact period and make unlimited calls during a contact period.
Off-Campus Contact	A college coach may have contact with you or your family off the college's campus beginning July 1 following the end of your junior/11th year of high school or opening day of classes of your senior/12th year (whichever comes first).
Unofficial Visit	You and your family may visit a college at your own expense at any time.
Official Visit	A college may pay for you and two family members to visit campus beginning April 1 of your junior/11th year of high school through the Sunday before the last Wednesday in June. After this date, a college may provide you the expense-paid visit after Sept. 1 of your senior/12th year.

MEN'S ICE HOCKEY, DIVISION I

RECRUITING METHOD	
Recruiting Materials and Electronic Correspondence (e.g., recruiting letters, social media messages, text messages)	You may receive brochures for camps, questionnaires, NCAA materials and nonathletics recruiting publications at any time. A coach may begin sending you recruiting materials and electronic correspondence Jan. 1 of your sophomore/10th year of high school.
Phone Calls to a Coach	You or your family may call a coach beginning Jan. 1 of your sophomore/10th year of high school.
Phone Calls From a Coach	A coach may call you or your family beginning Jan. 1 of your sophomore/10th year of high school.
Off-Campus Contact	A college coach may have contact with you or your family off the college's campus beginning Aug. 1 of your junior/11th year of high school.
Unofficial Visit	You and your family may visit a college at your own expense beginning Jan. 1 of your sophomore/10th year of high school.
Official Visit	A college may pay for you to visit the college beginning Aug. 1 of your junior/11th year of high school.

LACROSSE AND SOFTBALL, DIVISION I

RECRUITING METHOD	
Recruiting Materials and Electronic Correspondence (e.g., recruiting letters, social media messages, text messages)	You may receive brochures for camps, questionnaires, NCAA materials and nonathletics recruiting publications at any time. A coach may begin sending you recruiting materials and electronic correspondence Sept. 1 of your junior/11th year of high school.
Phone Calls to a Coach	You or your family may call a coach beginning Sept. 1 of your junior/11th year of high school.
Phone Calls From a Coach	A coach may call you or your family beginning Sept. 1 of your junior/11th year of high school.
Off-Campus Contact	A college coach may have contact with you or your family off the college's campus beginning Sept. 1 of your junior/11th year of high school. Contacts made during your junior/11th year may occur at your educational institution or residence.
Unofficial Visit	You and your family may visit a college at your own expense beginning Sept. 1 of your junior/11th year of high school.
Official Visit	A college may pay for you to visit the college beginning Sept. 1 of your junior/11th year of high school.

BASEBALL, DIVISION I

RECRUITING METHOD	
Recruiting Materials and Electronic Correspondence (e.g., recruiting letters, social media messages, text messages)	You may receive brochures for camps, questionnaires, NCAA materials and nonathletics recruiting publications at any time. A coach may begin sending you recruiting materials and electronic correspondence Sept. 1 of your junior/11th year of high school.
Phone Calls to a Coach	You or your family may call a coach at any time.
Phone Calls From a Coach	A coach may call you or your family beginning Sept. 1 of your junior/11th year of high school.
Off-Campus Contact	A college coach may have contact with you or your family off the college's campus immediately after July 1 following the end of your junior/11th year of high school or opening day of classes of your senior/12th year (whichever is earlier).
Unofficial Visit	You and your family may visit a college at your own expense beginning Sept. 1 of your junior/11th year of high school.
Official Visit	A college may pay for you to visit the college beginning Sept. 1 of your junior/11th year of high school.

ALL OTHER SPORTS, DIVISION I

RECRUITING METHOD	
Recruiting Materials and Electronic Correspondence (e.g., recruiting letters, social media messages, text messages)	You may receive brochures for camps, questionnaires, NCAA materials and nonathletics recruiting publications at any time. A coach may begin sending you recruiting materials and electronic correspondence June 15 between your sophomore/10th and junior/11th year of high school.
Phone Calls to a Coach	You or your family may call a coach beginning June 15 between your sophomore/10th and junior/11th year of high school.
Phone Calls From a Coach	A coach may call you or your family beginning June 15 between your sophomore/10th and junior/11th year of high school.
Off-Campus Contact	A college coach may have contact with you or your family off the college's campus beginning Aug. 1 of your junior/11th year of in high school.
Unofficial Visit	You and your family may visit a college at your own expense beginning Aug. 1 of your junior/11th year of high school.
Official Visit	A college may pay for you to visit the college beginning Aug. 1 of your junior/11th year of high school.

DIVISIONS II AND III

RECRUITING METHOD	DIVISION II	DIVISION III
Recruiting Materials	You may receive brochures for camps, questionnaires, NCAA materials and nonathletics recruiting publications at any time. A coach may begin sending you printed recruiting materials June 15 immediately preceding your junior/11th year of in high school.	You may receive printed materials any time.
Telephone Calls	No limit on number of calls by college coach beginning June 15 immediately preceding your junior/11th year of high school. You may make calls to the coach at your expense. Calls may include multiple coaches.	No limit on number of calls or when they can be made by the college coach. You may make calls to the coach at your expense.
Off-Campus Contact	A college coach may have contact with you or your parents/legal guardians off the college's campus beginning June 15 immediately preceding your junior/11th year of high school. No limit on number of contacts off campus.	A college coach may have contact with you or your relatives or guardians off the college's campus after your sophomore/10th year of high school. No limit on number of contacts off campus.
Unofficial Visit	You may make an unlimited number of unofficial visits any time, except during a dead period.	You may make an unlimited number of unofficial visits any time.
Official Visit	A college may pay for you to visit the college beginning June 15 immediately preceding your junior/11th year of high school. Between June 15 before your junior/11th year and the end of your senior/12th year, you may make only one official visit per college and up to a maximum of five official visits to Division I colleges. There is no limit to official visits to Division II colleges.	A college may pay for you to visit the college beginning Jan. 1 of your junior/11th year of high school. There is no limit to official visits to Division III colleges. However, you may only be provided one visit per college.



LET'S PLAY

HALF A
MILLION
STUDENT-
ATHLETES
IN 24 SPORTS
AT 1,100 SCHOOLS.



ELIGIBILITY CENTER

ncaa.org/playcollegesports